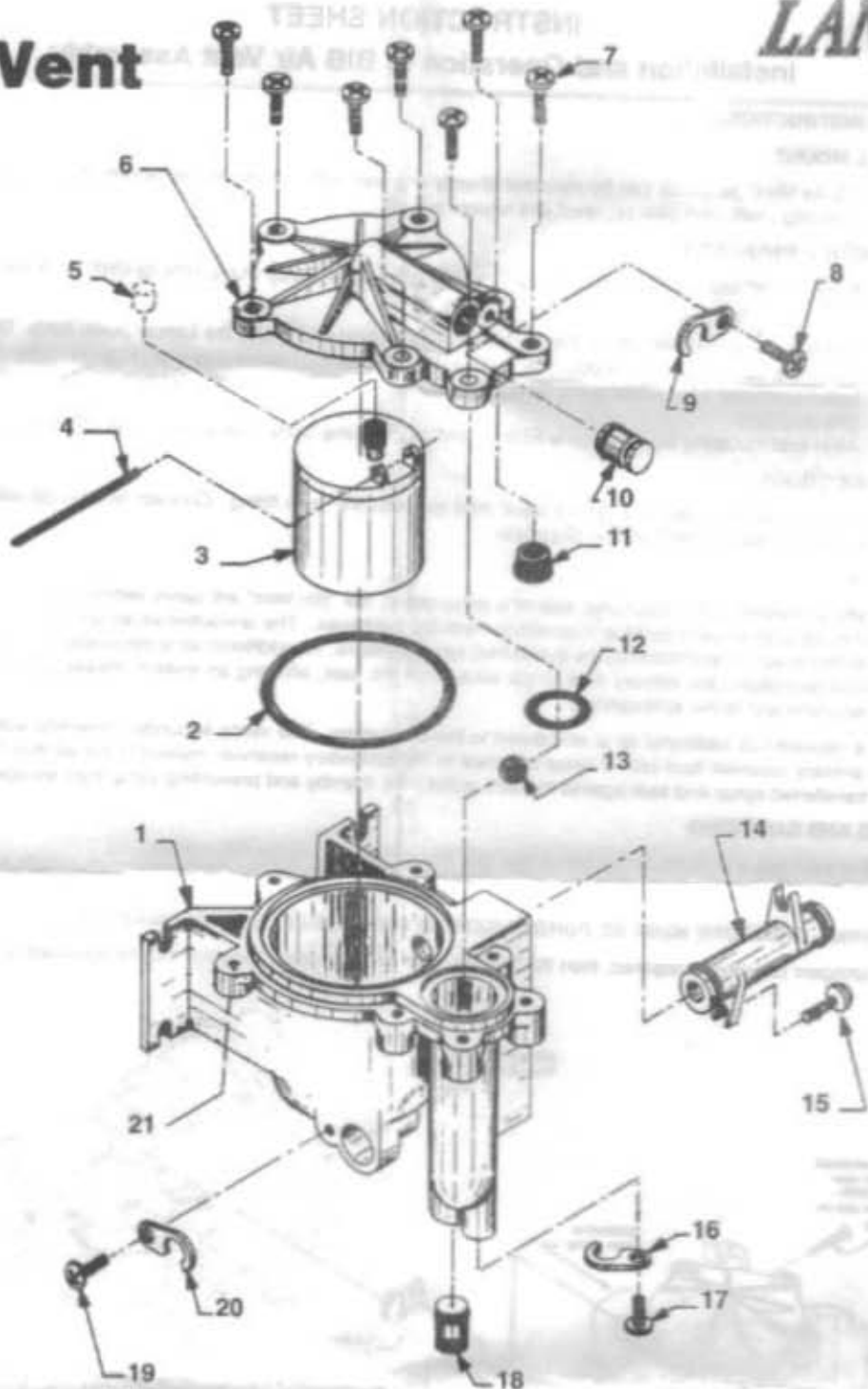


Coca-Cola

B.I.B. Vent

P.N. 82-2684

LANCER



ITEM	PART NO.	DESCRIPTION	ITEM	PART NO.	DESCRIPTION
1	05-0334/01	Bowl, Reservoir, BIB Vent	12	02-0134	O-Ring (2-116)
2	02-0135	O-Ring, Cap (2-138)	13	14-0006	Ball, Hollow, 3/8 Inch, BIB Vent
3	54-0036	Float Assy, Primary	14	54-0037	Connector Assy
4	10-0133	Pin, Hinge, BIB Vent	15	04-0155	Screw, 8 - 16 x 0.437, PHD, PH, PLT, SS
5	05-0338	Seal, Primary, Float, BIB Vent	16	03-0005	Retainer, Single, SM
6	05-0335	Cap, Reservoir, BIB Vent	17	04-0155	Screw, 8 - 16 x 0.437, PHD, PH, PLT, SS
7	04-0313	Screw, 8 - 32 x 0.625, THMS, PH, SS	18	01-1059	Plug, Valve, Sold Out, Assy
8	04-0155	Screw, 8 - 16 x 0.437, PHD, PH, PLT, SS	19	04-0155	Screw, 8 - 16 x 0.437, PHD, PH, PLT, SS
9	03-0005	Retainer, Single, SM	20	03-0056	Retainer, Fitting, Syrup, SS
10	01-1059	Plug, Valve, Sold Out, Assy	21	04-0189	Insert, 8 - 32 x 0.300
11	05-0340	Seal, Secondary, BIB Vent			

INSTRUCTION SHEET

Installation and Operation of BIB Air Vent Assembly

1. MOUNTING INSTRUCTIONS

1.1 WALL MOUNT

The "Bib Air Vent" assembly can be mounted directly to a wall with four (4) #6 self tapping wood screws, 3/4" long. Mount valve assembly with vent hole up, level and square to wall.

1.2 LANCER PUMP MOUNT

The "Bib Air Vent" assembly can be mounted directly to a Lancer Syrup Pump (PN 82-0109, with sold-out) by the following method:

- Remove the screw indicated in Figure 1 from the left hand end cap of the Lancer pump body. Discard screw.
- Assemble connector (PN 54-0037) to "Bib Air Vent" inlet port. Secure with one (1) short screw (PN 04-0317).
- Insert connector into Lancer pump syrup outlet port. Snap fingers over sold-out device. Secure with one (1) short screw (PN 04-0317).
- Align wall mounting leg with screw hole on end cap of pump body. Secure with one (1) long screw (PN 04-0313).

2. HOSE CONNECTIONS

Connect pump "syrup outlet" hose into "Bib Air Vent" inlet port with 3/8" barb fitting. Connect outlet hose with 3/8" barb fitting from outlet port on "Bib Air Vent" to inlet port on dispenser.

3. OPERATION

When properly connected to the discharge side of a syrup pump, the "Bib Vent" will safely remove air which has been introduced into the system through vacuum leaks or connecting fresh Bib packages. The unwanted air accumulates in the upper chamber of the vent's primary reservoir and compresses due to inlet syrup pressure. As additional air is introduced, it displaces the syrup. When the syrup level decreases, the primary float drops away from the seat, allowing an instant release of air to transfer through the secondary reservoir and to the atmosphere.

This cycle is repeated as additional air is introduced to the Bib system. The vent's secondary reservoir acts as a safety chamber, should the primary reservoir float fail. If syrup transfers to the secondary reservoir, instead of the air then the secondary float will rise in the transferred syrup and seal against the air's outlet seat, thereby preventing syrup from escaping.

4. CLEANING AND SANITIZING

Cleaning and sanitized should be performed concurrent with sanitization of the Bib system.

WARNING

ALL INTERNAL PRESSURE MUST BE PURGED BEFORE REMOVING PLUGS OR DISASSEMBLY.

If a more stringent cleaning is required, then the transfer tube and secondary reservoir can be sanitized by removing the clean out plugs.

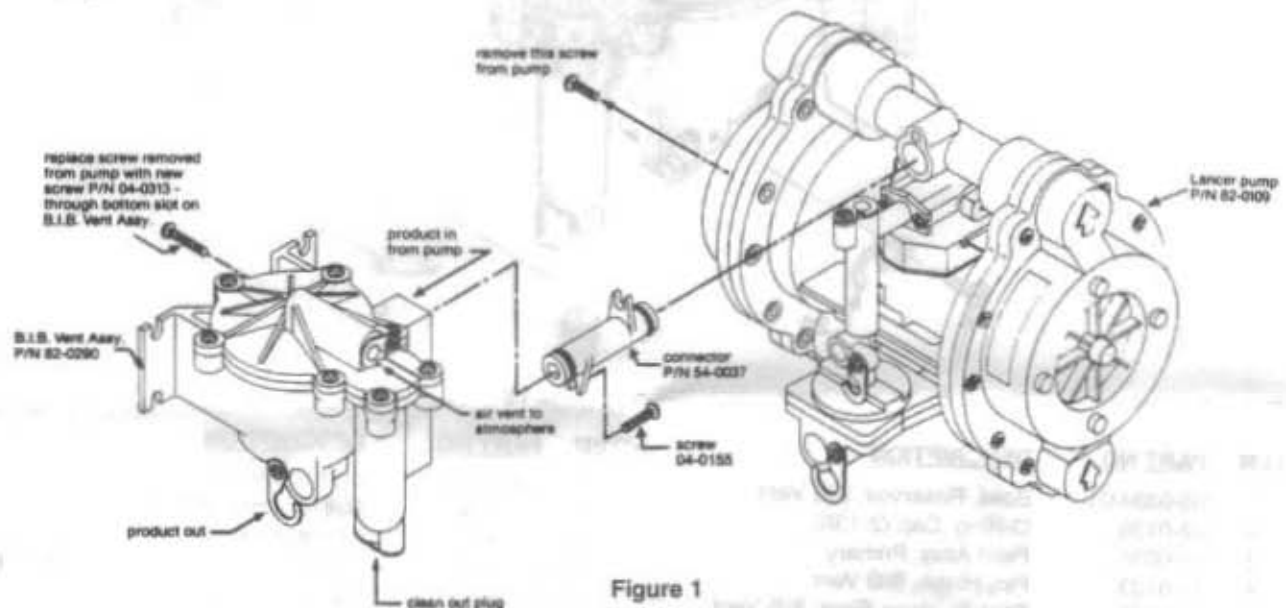


Figure 1

LANCER

6655 LANCER BLVD. • SAN ANTONIO, TEXAS 78219 USA • (210) 310-7000

FAX SALES

- USA-CANADA - 210-310-7250 • LATIN AMERICA - 210-310-7245 • ASIA - 210-310-7242 •
- EUROPE - 32-2-755-2399 • PACIFIC - 61-8-8268-1978 •

FAX ENGINEERING: • 210-310-7096

"Lancer" is the registered trademark of Lancer • Copyright — 1998 by Lancer, all rights reserved.

DATE: 12/22/98
PN: 28-0011/02